

2023 Polling Site Accessibility Report: Marion County, WV

Disability Rights of West Virginia (DRWV) is the federally mandated protection and advocacy system for people with disabilities in West Virginia. One of DRWV's grants is Protection and Advocacy for Voting Access (PAVA). The PAVA grant program allows DRWV to ensure that individuals with disabilities can access full participation in the election process.

Title II of the Americans with Disabilities Act (ADA) requires state and local governments (public entities) to ensure that people with disabilities have a full and equal opportunity to vote. The ADA's provisions apply to all aspects of voting, including polling places. People with disabilities must have the opportunity to be full participants in an integrated civic event.

On August 1 and 2, 2023, a DRWV Advocate completed exterior accessibility monitoring of all precincts in Marion County and this report contains our findings. The following ADA codes referenced below are the most common issues noted in this county.

206.2.1 Site Arrival Points. At least one accessible route shall be provided within the site from accessible parking spaces and accessible passenger loading zones; public streets and sidewalks; and public transportation stops to the accessible building or facility entrance they serve.

302.1 Floor and ground surfaces shall be stable, firm, and slip resistant and shall comply with 302. Access aisles shall be at the same level as the parking spaces they serve. Changes in level are not permitted. EXCEPTION: Slopes not steeper than 1:48 shall be permitted.

309.4 Operable parts shall be operable with one hand and shall not require tight grasping, pinching, or twisting of the wrist. The force required to activate operable parts shall be 5 pounds (22.2 N) maximum.

502.2 Vehicle Spaces. Car parking spaces shall be 96 inches (2440 mm) wide minimum and van parking spaces shall be 132 inches (3350 mm) wide minimum, shall be marked to define the width, and shall have an adjacent access aisle complying with 502.3. EXCEPTION: Van parking spaces shall be permitted to be 96 inches (2440 mm) wide minimum whereas the access aisle is 96 inches (2440 mm) wide minimum.

502.6 Identification. Parking space identification signs shall include the International Symbol of Accessibility complying with 703.7.2.1. Signs identifying van parking spaces shall contain the designation "van accessible." Signs shall be 60 inches (1525 mm) minimum above the finish floor or ground surface measured to the bottom of the sign.

The **2010 ADA Standards for Accessible Designs** referenced in this report can be found online at:


https://www.ada.gov/regs2010/2010ADAStandards/2010ADAStandards_prt.pdf

Four other valuable resources have been included for your reference:

- ADA Checklist for Polling Places <https://www.ada.gov/votingck.htm>
- The Americans with Disabilities Act and Other Federal Laws Protecting the Rights of Voters with Disabilities
https://www.ada.gov/ada_voting/ada_voting_ta.htm
- Solutions for Five Common ADA Access Problems at Polling Places
https://www.ada.gov/ada_voting/voting_solutions_ta/polling_place_solutions.htm
- ADA Quick Tips Tax Incentives <https://adata.org/factsheet/quicktips-tax>

The ADA requires that public entities ensure that people with disabilities can access and use all voting facilities. Because a mix of public and private facilities are used as polling places, public entities may ensure Election Day accessibility of a polling place by using low-cost, temporary measures, such as portable ramps or door stops, rather than making permanent modifications to a building. If temporary measures will not fix a barrier, and public entities are unable to make a permanent modification to fix the barrier, then the public entity must look for an alternative, accessible polling place.

The tables on the following pages list the ADA Standards and ADA Title II regulations, if applicable, for each area we monitored, the issues noted at each site, if any, and suggestions for meeting ADA compliance on election days. Please note that the following is a condensed version of the full accessibility report that was provided to Marion County Election Officials.

Barrackville Community Building	
Issue(s)	The existing parking signage is not displayed at the proper height (502.6). The accessible parking space and access aisle are not clearly defined (502.2). The slope of the parking facility exceeds ADA Standards (502.2, 502.4). The slope of the access route (ramp up to entrance door) exceeds ADA Standards (302.1).
Exhibit	 <p>The photograph shows the exterior of the Barrackville Community Building with a designated accessible parking space. A blue sign with a wheelchair icon and the words "HANDICAPPED PARKING" is mounted on a post. A hand is holding a yellow measuring tape against the sign. A red level is placed on the ground surface, showing a reading of 4.5. A red text box at the bottom of the image states "Parking space and access aisle not clearly defined." with red arrows pointing to the parking area and the level.</p>



Suggestions for ADA Compliance	The front entrance is not accessible due to the excessive slope of the parking facility and door threshold. Utilize another entrance that may better comply with ADA Standards; There is a side entrance in compliance with ADA Standards with a paved area in the rear of the building that could be used for accessible parking spaces if marked appropriately.
---------------------------------------	---

Baxter Community Building	
Issue(s)	No accessible parking signage is displayed (502.6). The curb ramp is protruding into the access aisle (502.3, 502.4). There is debris (cigarette disposal container) obstructing the access route (206.2.2, 302.1).

<p>Exhibit</p>	
<p>Suggestions for ADA Compliance</p>	<p>Relocate either the curb ramp or the access aisle to comply with ADA Standards. Install parking signage that designates the space to be van accessible. Clear the access route of debris to ensure at least 36" of clearance for travel to entrance.</p>

<p>Blackshere Elementary School</p>	
<p>Issue(s)</p>	<p>No accessible parking signage is displayed (502.6).</p>

<p>Exhibit</p>	
<p>Suggestions for ADA Compliance</p>	<p>Install parking signage to the appropriate height (60") as outlined in the ADA Standards.</p>

<p>Bunner's Ridge Fire Department</p>	
<p>Issue(s)</p>	<p>No accessible parking spaces are provided (502.2). The paved parking facility is not suitable for accessible parking spaces due to the excessive slope (502.2, 502.3, 502.4). There is a roughly 1-inch lipped edge at the end of the ramp (303.4). The landing at the bottom of the ramp is not level nor does it meet the length and width requirements as outlined in the ADA Standards (405.7). The landing at the top of the ramp, though level, does not meet the length and width requirements (405.7). There is no interior handrail on the ramp (405.8). There is no edge protection provided on the ramp where there is a 30" drop off (405.9).</p>

Exhibit



No accessible parking spaces,
access aisles, or signage.

<p>Suggestions for ADA Compliance</p>	<p>Address the issues identified or relocate the polling place to another facility that complies with ADA Standards.</p>

<p>Central United Methodist Church</p>	
<p>Issue(s)</p>	<p>The accessible parking spaces are located on a slope that exceeds ADA standards; Slope is at 3.4 degrees when it shouldn't exceed 1.19 degrees (502.2). There are no access aisles provided for each parking space (502.3). No parking space is designated as van accessible (502.2). Existing parking signage is not displayed at the proper height (502.6).</p>

<p>Exhibit</p>	
<p>Suggestions for ADA Compliance</p>	<p>Since there is no paved, level parking facility located nearby and the only accessible entrances are located on a slope, it might be best to move this polling location to another facility nearby that better complies with ADA Standards.</p>

<p>Colfax Community Building</p>	
<p>Issue(s)</p>	<p>The paved area for the accessible parking space is not clearly defined (the signage displayed in the window is difficult to see and there are no markings) (502.2). The paved parking area is not wide enough to fit a parking space and access aisle to the width requirements as outlined in the ADA Standards (502.2). The door hardware is not accessible (309.4). The slope of the access ramp exceeds ADA standards; It is at a 10-degree slope when it should not exceed 4.76 degrees (405.2). The area in front of the door is not level in all directions (405.7).</p>

Exhibit



Parking space does not meet size requirements.

Suggestions for ADA Compliance	Since there is no paved, level parking facility located nearby and the only accessible entrances are located on a slope, it might be best to move this polling location to another facility nearby that better complies with ADA Standards.
---------------------------------------	---

Fairmont Senior Field Center

Issue(s)	There is no accessible parking signage displayed, nor is there a space designated as van accessible (502.2, 502.6).
-----------------	---



Suggestions for ADA Compliance	Install parking signage at the required height (60”) as outlined in the ADA Standards and designate a number of the spaces to be van accessible, complying with 208.2.4 as it relates to van accessible parking spaces. There are already spaces there that meet the size requirements, so simply installing the correct signage would suffice.
---------------------------------------	---

Farmington Community Building

Issue(s)	The parking facility is unstable due to the loose gravel (302.1). There is no accessible parking provided (502.2). There is no access route connecting the parking facility to the entrance, due to a large curb with a step up to enter the building (206.2.2, 303.4).
-----------------	---

Exhibit



Parking facility is unstable.
No accessible parking.



**Suggestions
for ADA
Compliance**

Pave a section of the parking facility to ensure a level, firm, stable, and non-slip surface and install accessible parking spaces with access aisles

and appropriate signage, complying with ADA Standards. Designate at least one parking space to be van accessible.

Since the height of the curb (see first picture in “Exhibits”) leading to the side entrance exceeds 6”, it would be considered a ramp that would need handrails installed as well. Therefore, it may be best to utilize the back entrance for polling (see second picture provided in “Exhibits”); The height of the curb’s edge is lower than the other, which may make it easier to install a curb ramp. Handrails would not be required for this ramp.

First Baptist Church

Issue(s) The existing accessible parking signage is not displayed at the proper height (502.6). There are not clearly defined access aisles for each accessible parking space (502.2, 502.3). There is no parking space designated as van accessible (502.2). The door hardware is not accessible (309.4).





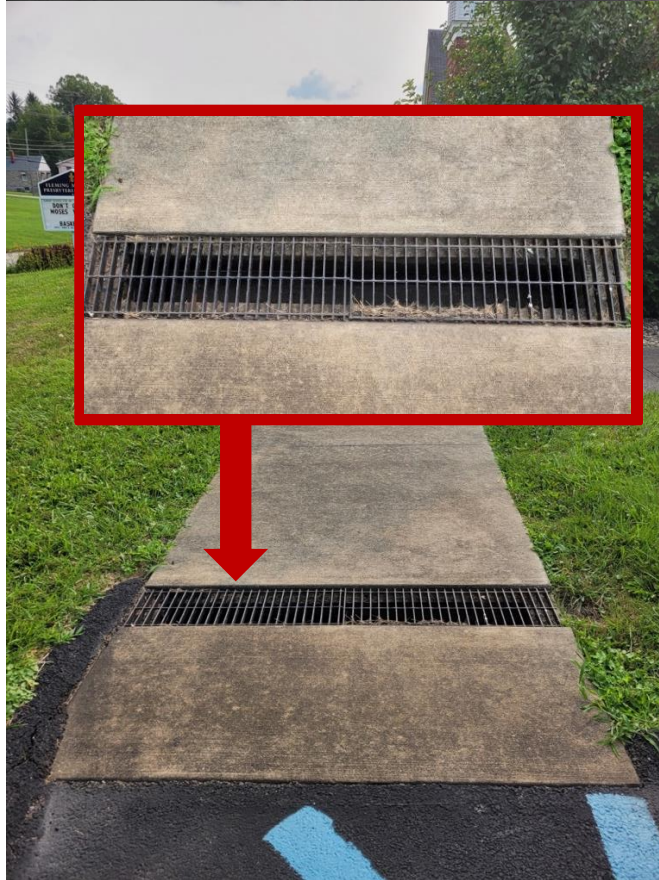
<p>Suggestions for ADA Compliance</p>	<p>Replace the inaccessible door hardware with a loop, push, or pull hardware. Adjust existing parking signage to the appropriate height requirement (60”) and designate at least one space to be van accessible. Install access aisles, complying with ADA Standards 502.2.</p>
--	--

<p>Fleming Memorial Presbyterian Church</p>	
<p>Issue(s)</p>	<p>There is no accessible parking signage displayed (502.6). There is no parking space designated van accessible (502.2). The access aisle does not meet width requirements (502.2, 502.3). There are missing access aisles for 2 of the 3 parking spaces (502.3). Drain grate is obstructing the access route (302.1).</p>

Exhibit




No signage displayed.



Suggestions for ADA Compliance

Use a temporary mat to cover the drain grate or install a drain grate with smaller openings. Install parking signage to the required height (60") as outlined in the ADA Standards. Install access aisles to the

	required width (at least 60”) to serve each parking space, complying with 502.3. Designate at least one space to be van accessible, ensuring it complies with the ADA Standards for van parking spaces.
--	---

Grant Town Community Building	
Issue(s)	Accessible parking signage is missing for most of the spaces (502.6). Not all parking spaces have an access aisle attached (502.2, 502.3). There is no parking space designated as van accessible (502.2).
Exhibit	 <p>The photograph shows the Grant Town Community Building, a brick structure with a sign that reads "GRANT TOWN COMMUNITY BLDG". In front of the building is a paved parking lot with several blue-painted accessible parking spaces. Red arrows point to specific areas: one points to a sign that says "No accessible parking signage displayed.", and another points to a space with a red box that says "Missing access aisles." A third arrow points to a space with a sign that says "COMMUNITY BUILDING RECESSED PARKING".</p>
Suggestions for ADA Compliance	Install access aisles to serve each accessible parking space. Install parking signage to the required height (60”), designating at least one space to be van accessible.

Highland Ave UMC	
Issue(s)	There is missing signage for some of the accessible parking spaces (502.6). The telephone pole and patch of grass is protruding into the access aisle (502.2, 502.3). The other parking space is missing an access aisle (502.2, 502.3). Window AC Unit is protruding into the access route (307.1, 307.2).

Exhibit




Suggestions for ADA Compliance

Relocate the window AC unit so that it does not protrude into the access route. Install parking signage where needed to the required height (60") as outlined in the ADA standards, designating at least one space to be van accessible. Relocate the access aisle so there are no obstructions.

J. Harper Meredith Building	
Issue(s)	The slope of the curb ramp exceeds ADA standards; It is at a 7-degree slope when it should not exceed 4.76 degrees (405.2). There is no parking space designated as van accessible (502.2).
Exhibit	<p>Signage does not designate the parking to be van accessible.</p>
Suggestions for ADA Compliance	Adjust the existing curb ramp to comply with ADA Standards as it relates to slope. Designate at least one accessible parking space to be van accessible, with appropriate signage displayed at the proper height (60").
Mannington Middle School	
Issue(s)	The door hardware is inaccessible because it requires a thumb grasp on the top latch (309.4). The slope on curb ramp exceeds ADA Standards; The slope is 8.6 degrees when it should not exceed 4.76 degrees (405.2). There is no parking facility or passenger drop-off area provided (502.2).

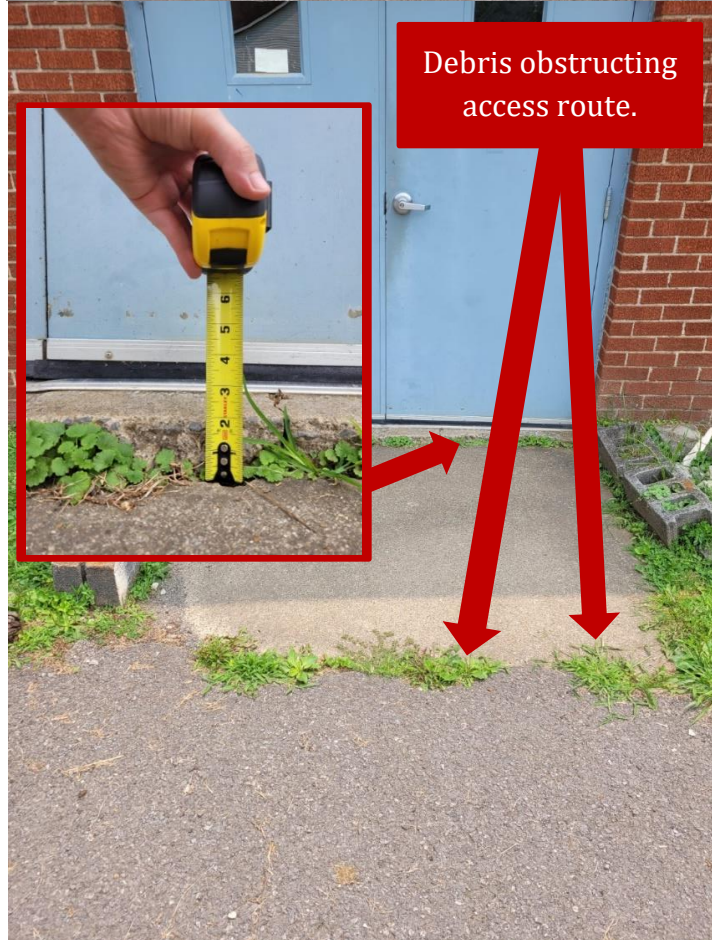
<p>Exhibit</p>	
<p>Suggestions for ADA Compliance</p>	<p>Replace the inaccessible door hardware with a loop, push, or pull hardware. Adjust the existing curb ramp to comply with ADA Standards as it relates to slope. Alternatively, relocate the polling place to another facility that complies with ADA Standards.</p> <p>Note: There is no accessible off-street parking or passenger loading zone provided. Though not a violation of ADA Standards, this can pose barriers for individuals with disabilities to access this polling location and should be taken into consideration when resolving the issues identified for this location.</p>

<p>Marion County Convention Center</p>	
<p>Issue(s)</p>	<p>The slope of the curb ramp exceeds ADA Standards; It is 6.3 degrees, and it should not exceed 4.76 degrees (405.2).</p>

<p>Exhibit</p>	
<p>Suggestions for ADA Compliance</p>	<p>Adjust the existing curb ramp to comply with ADA Standards as it relates to slope.</p>

<p>Metz Community Center</p>	
<p>Issue(s)</p>	<p>There is no accessible parking provided (502.2). There is debris (patches of grass and cracks in sidewalk) obstructing the access route to entry (302.1). There is a 2-inch lipped edge at the entrance door (303.4).</p>

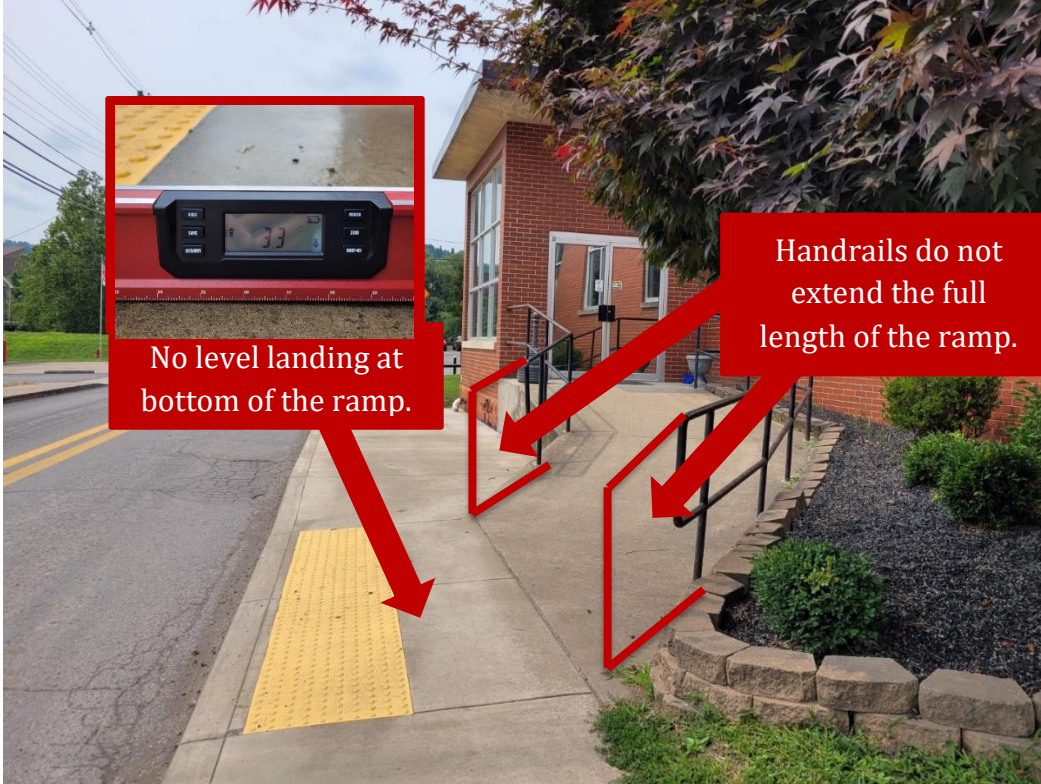
Exhibit

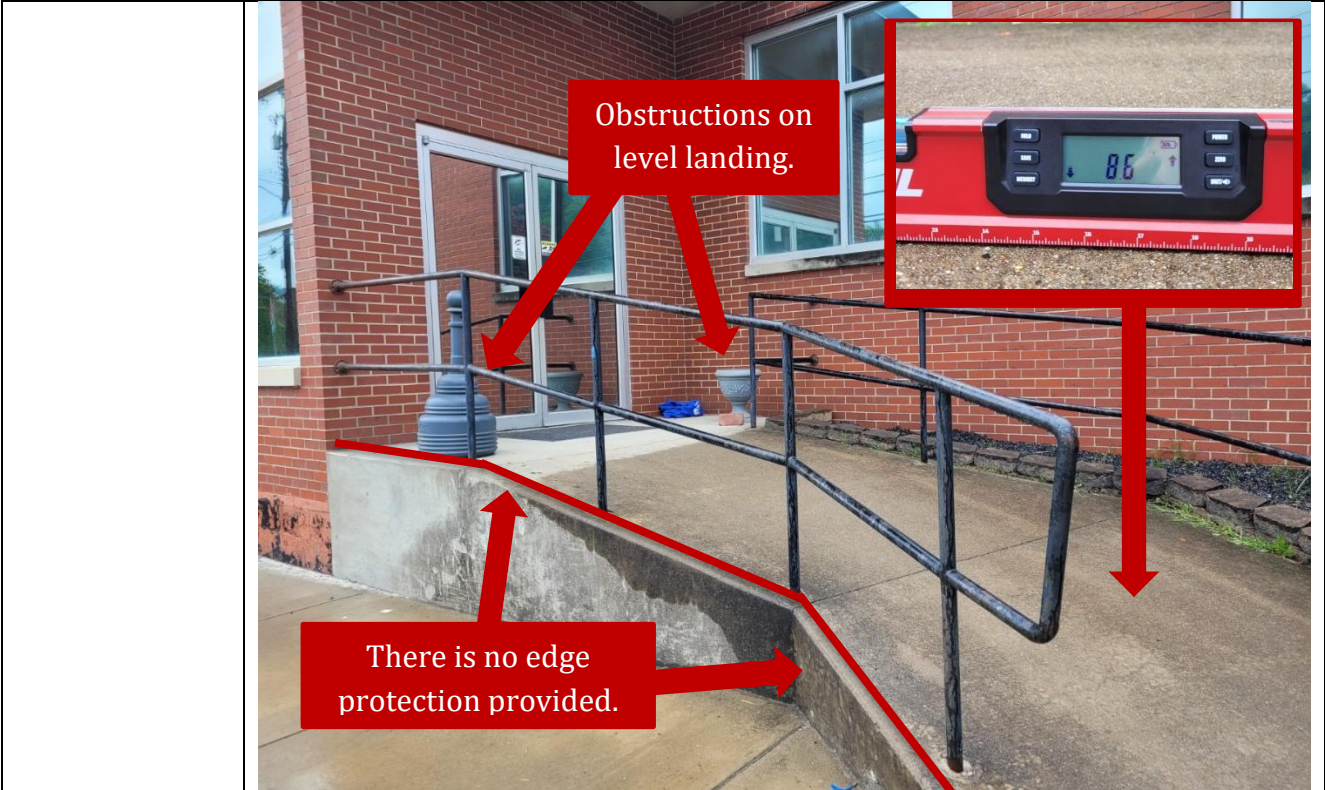


Suggestions for ADA Compliance	Install at least one accessible parking space, designated to be van accessible with appropriate signage and an access aisle. Clear the paved area of all debris (grass patches) to ensure a stable surface. Bevel the lipped edge at the door or utilize a temporary wedge. Repair sidewalk or utilize mats for the access route.
---------------------------------------	---

Monongah Town Hall

Issue(s)	Handrails are not extended to the bottom of the ramp (505.10.1). There is no edge protection on the ramp (405.9). The slope of the ramp exceeds ADA Standards; The slope runs 8.5-9.0 degrees but should not exceed 4.76 degrees (405.2). There is not a level landing provided at the bottom of the ramp (405.7). There is no accessible parking or passenger drop-off area provided (502.2).
-----------------	--

Exhibit	 <p>The photograph shows a concrete ramp leading to a brick building. A red callout box at the top left shows a close-up of a level sensor on the ramp surface, with a red arrow pointing to the ramp's end. A red callout box at the bottom left points to the end of the ramp, stating "No level landing at bottom of the ramp." A red callout box on the right side points to the handrails, stating "Handrails do not extend the full length of the ramp." The ramp has a yellow tactile strip at the bottom and a black metal handrail on the right side.</p>
----------------	---



Suggestions for ADA Compliance	Install handrail extensions and edge protection on the ramp. Ensure the ramp has a level landing, measured 60" by 60", provided at the bottom where it meets the curb ramp. Though there is still a 60" by 60" clearance on the level landing at the top of the ramp, the debris could cause obstruction to entry and should be removed.
---------------------------------------	--

Morningstar Baptist Church	
Issue(s)	The slope of the ramp exceeds ADA Standards; The beginning extension of the ramp is at a 6.4-degree slope when it should not exceed 4.76 degrees (405.2). There is no level landing measuring 60" by 60" where the ramp changes direction (405.7.4). The door hardware is inaccessible (309.4). The accessible parking spaces are not located on the closest route to the accessible entry (502.2, 206.2.2).

<p>Exhibit</p>	
<p>Suggestions for ADA Compliance</p>	<p>Address the issues identified with this entrance or utilize another entrance at this location that may comply with ADA Standards.</p> <p>Note: There are two other entrances located closer to the accessible parking facility provided and with some minor adjustments, could be made accessible.</p>


<p>National Guard Armory</p>	
<p>Issue(s)</p>	<p>The slope of the access route exceeds ADA Standards (403.3). The existing parking signage is not displayed at the proper height (502.6).</p>

Exhibit



Suggestions for ADA Compliance

Adjust the existing parking signage to the minimum height required in the ADA Standards (60"). Utilize another entrance that is accessible or install a temporary parking/passenger drop-off area in front of the main entrance to avoid the sloped access route from the accessible parking facility.

Issue(s)	There is no accessible parking signage displayed (502.6). No accessible space is designated as van accessible (502.2).
Exhibit	
Suggestions for ADA Compliance	Install parking signage where needed to the required height (60") as outlined in the ADA standards, designating at least one space to be van accessible.

Pleasant Valley Municipal Building	
Issue(s)	The existing signage is not displayed at the proper height (502.6). There is no accessible parking space designated as van accessible (502.2). One space's parking signage is missing (502.6).

<p>Exhibit</p>	
<p>Suggestions for ADA Compliance</p>	<p>Adjust the existing parking signage to the minimum height required in the ADA Standards (60"). Designate at least one of the accessible spaces to be van accessible with appropriate signage.</p> <p>Note: Since the left space is missing signage, it could be helpful to designate it as the van accessible space and simply install the appropriate signage.</p>

<p>Pleasant Valley VFD</p>	
<p>Issue(s)</p>	<p>The existing parking signage is not displayed at the proper height (502.6). The accessible parking space and access aisle is not clearly defined (502.2). There is a 1½ -inch lipped edge on the landing before the door, and a 1-inch lipped edge at the door (303.4).</p>

Exhibit



Suggestions for ADA Compliance

Bevel the lipped edges or install temporary wedges and/or mats to make the access route and entrance accessible. Adjust the existing signage to meet the minimum height required by the ADA Standards (60"). Clearly define the accessible parking space and access aisle by using painted lines, traffic cones, etc.

Police Reserve Building

Issue(s)

There is no accessible parking provided (502.2).

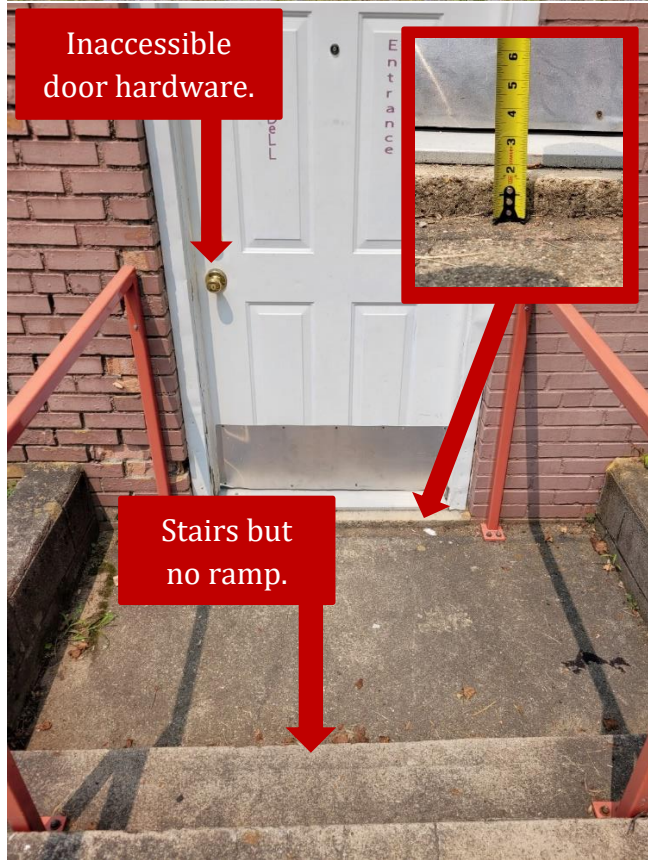
Exhibit	
Suggestions for ADA Compliance	Install accessible parking spaces closest to an access route with access aisles and appropriate signage, complying with ADA Standards.

Quiet Dell Community Building	
Issue(s)	The parking facility is not stable (302.1, 502.4). The existing accessible parking signage is not visible or legible from the parking facility (502.6). The accessible parking spaces are not clearly defined (502.2, 502.3.3). Both entrances have unstable access routes (302.1). One entrance (labeled as the main entrance – white door) has only stairs and no ramp, inaccessible door hardware, and a lipped edge at the door threshold (405.1, 309.4, 303.4). The other entrance has no outer door hardware (309.4).
Exhibit	



Access route is not stable. There is no ramp.


Unstable parking facility. Accessible parking is not clearly defined.



Inaccessible door hardware.



Stairs but no ramp.

		
Suggestions for ADA Compliance	Address the issues identified or relocate the polling place to another facility that complies with ADA Standards.	

Rivesville Community Building	
Issue(s)	No accessible parking is provided (502.2). Grass is overgrowing on portions of the access route, causing it to not meet width requirements (302.1, 403.5.1). There is a ½-inch crack in the pavement on the access route (303.4). The door hardware is inaccessible (309.4).

Exhibit



Suggestions for ADA Compliance	Replace the inaccessible door hardware with a loop, push, or pull hardware. Install at least one van accessible parking space with an access aisle and appropriate signage. Utilizing mats may be an option to extend the width of the access route and cover the crack in the sidewalk, so long as they form a stable surface.
---------------------------------------	---

White Hall Public Safety Building

Issue(s)	The access aisle does not meet width requirements (502.2, 502.3). The existing parking signage is not displayed at the proper height and is not clearly visible from the parking facility (displayed inside the window) (502.6). There is no parking space designated as van accessible (502.2).
-----------------	--




Suggestions for ADA Compliance	Adjust existing parking signage to the minimum height required in the ADA Standards (60”) and relocate it outside the window to be easily visible to a driver. Designate at least one parking space to be van accessible with appropriate signage. Extend the existing access aisle to be at least 60” in width.
---------------------------------------	--

Winfield UM Community Building

Issue(s)	The existing parking signage is not displayed at the proper height (502.6). The parking facility and access route are unstable due to the loose gravel (502.4). There is a ½-inch crack in the pavement on the access route (302.1, 302.3). There is no handrail extension on the right side of the ramp (505.10.1). There is no edge protection provided on the ramp (405.9).
-----------------	--

<p>Exhibit</p>	<p>The photograph shows an accessible parking space next to a white building. A callout box in the top left shows a hand holding a yellow measuring tape against a signpost, with the text "Signage not displayed at proper height." Another callout box at the bottom left points to the gravel area with the text "Unstable parking facility and access route." A third callout box at the bottom right points to the ramp area with the text "Missing handrail extension and missing edge protection." A blue "RESERVED PARKING" sign with a wheelchair icon is visible on the signpost.</p>
<p>Suggestions for ADA Compliance</p>	<p>Pave the accessible parking area to ensure a firm, stable, and non-slip surface. Adjust the existing parking signage to meet the minimum height required by the ADA Standards (60"). Ensure at least one parking space is designated as van accessible. Repair the damaged area of the ramp or utilize a mat to cover it. Install handrail extensions and edge protection on the ramp.</p>

<p>Worthington VFD</p>	
<p>Issue(s)</p>	<p>There is no accessible parking provided (502.2).</p>

<p>Exhibit</p>	
<p>Suggestions for ADA Compliance</p>	<p>Since the paved parking area in front of the building is on a slope that exceeds ADA Standards, utilize the paved area along the right side of the building for an accessible parking facility. Install at least one van accessible parking space with an access aisle and appropriate signage. Make sure to install signage directing voters to the accessible parking area and entrance.</p>

Disability Rights of WV strives to ensure all polling sites in West Virginia are accessible for voters with disabilities. If you have accessibility concerns about your polling site or

would like your polling site to be evaluated for accessibility, please contact our office via email pava@drowv.org or by calling 304-346-0847.