

2023 Polling Site Accessibility Report: Marshall County, WV

Disability Rights of West Virginia (DRWV) is the federally mandated protection and advocacy system for people with disabilities in West Virginia. One of DRWV's grants is Protection and Advocacy for Voting Access (PAVA). The PAVA grant program allows DRWV to ensure that individuals with disabilities can access full participation in the election process.

Title II of the Americans with Disabilities Act (ADA) requires state and local governments (public entities) to ensure that people with disabilities have a full and equal opportunity to vote. The ADA's provisions apply to all aspects of voting, including polling places. People with disabilities must have the opportunity to be full participants in an integrated civic event.

On September 25, 2023, a DRWV Advocate completed exterior accessibility monitoring of all precincts in Marshall County and this report contains our findings. The following ADA codes referenced below are the most common issues noted in this county.

206.2.1 Site Arrival Points. At least one accessible route shall be provided within the site from accessible parking spaces and accessible passenger loading zones; public streets and sidewalks; and public transportation stops to the accessible building or facility entrance they serve.

302.1 Floor and ground surfaces shall be stable, firm, and slip resistant and shall comply with 302. Access aisles shall be at the same level as the parking spaces they serve. Changes in level are not permitted. EXCEPTION: Slopes not steeper than 1:48 shall be permitted.

309.4 Operable parts shall be operable with one hand and shall not require tight grasping, pinching, or twisting of the wrist. The force required to activate operable parts shall be 5 pounds (22.2 N) maximum.

502.2 Vehicle Spaces. Car parking spaces shall be 96 inches (2440 mm) wide minimum and van parking spaces shall be 132 inches (3350 mm) wide minimum, shall be marked to define the width, and shall have an adjacent access aisle complying with 502.3. EXCEPTION: Van parking spaces shall be permitted to be 96 inches (2440 mm) wide minimum whereas the access aisle is 96 inches (2440 mm) wide minimum.

502.6 Identification. Parking space identification signs shall include the International Symbol of Accessibility complying with 703.7.2.1. Signs identifying van parking spaces shall contain the designation "van accessible." Signs shall be 60 inches (1525 mm) minimum above the finish floor or ground surface measured to the bottom of the sign.

The **2010 ADA Standards for Accessible Designs** referenced in this report can be found online at:


https://www.ada.gov/regs2010/2010ADAStandards/2010ADAStandards_prt.pdf

Four other valuable resources have been included for your reference:


- ADA Checklist for Polling Places <https://www.ada.gov/votingck.htm>
- The Americans with Disabilities Act and Other Federal Laws Protecting the Rights of Voters with Disabilities
https://www.ada.gov/ada_voting/ada_voting_ta.htm
- Solutions for Five Common ADA Access Problems at Polling Places
https://www.ada.gov/ada_voting/voting_solutions_ta/polling_place_solutions.htm
- ADA Quick Tips Tax Incentives <https://adata.org/factsheet/quicktips-tax>

The ADA requires that public entities ensure that people with disabilities can access and use all voting facilities. Because a mix of public and private facilities are used as polling places, public entities may ensure Election Day accessibility of a polling place by using low-cost, temporary measures, such as portable ramps or door stops, rather than making permanent modifications to a building. If temporary measures will not fix a barrier, and public entities are unable to make a permanent modification to fix the barrier, then the public entity must look for an alternative, accessible polling place.

The tables on the following pages list the ADA Standards and ADA Title II regulations, if applicable, for each area we monitored, the issues noted at each site, if any, and suggestions for meeting ADA compliance on election days. Please note that the following is a condensed version of the full accessibility report that was provided to Marshall County Election Officials.

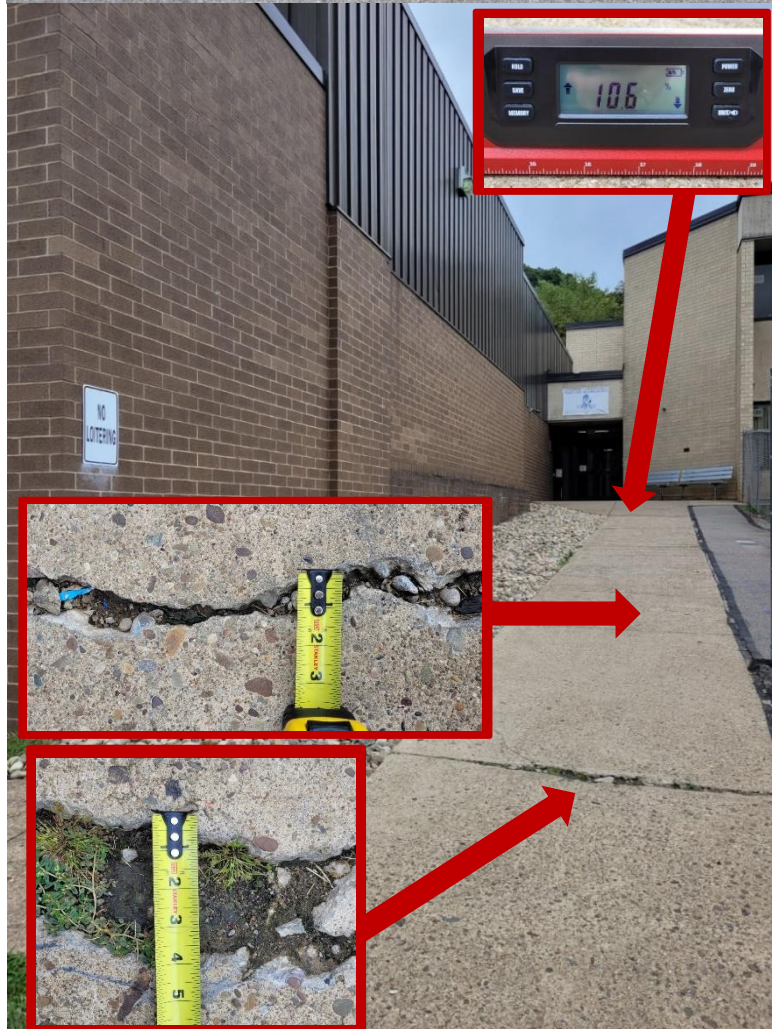
Cameron Elementary School	
Issue(s)	No accessible parking is provided (502.2).
Exhibit	 <p>The photograph shows the exterior of Cameron Elementary School. A paved parking lot is visible on the left, with a red arrow pointing to it from a red box containing the text "No accessible parking spaces." A concrete sidewalk leads from the parking lot towards the school building. A red arrow points from a red box containing the text "Entrance used for election day." to a dark entrance on the right side of the building. The building is constructed of light-colored brick with a reddish-brown accent above the entrance. A large tree stands in the middle ground, and a white SUV and a blue car are parked in the lot.</p>
Suggestions for ADA Compliance	Install at least one van accessible parking space in the paved lot, where it would connect with the accessible route to entry.

Central Grade School	
Issue(s)	There is no accessible parking space designated as van accessible (502.2). The slope of the curb ramp exceeds ADA Standards (405.2).

<p>Exhibit</p>	
<p>Suggestions for ADA Compliance</p>	<p>Install appropriate signage to designate at least one of the accessible parking spaces to be van accessible. Adjust the slope of the curb ramp so it does not exceed 8.3%.</p>

<p>Central Mcmechan School</p>	
<p>Issue(s)</p>	<p>The parking facility is sloped (502.4). There is no accessible parking signage displayed and no designated van accessible parking space (502.2, 502.6). The slope of the curb ramp from the parking facility exceeds ADA Standards (405.2). The slope of the accessible route exceeds ADA Standards. There are damaged areas in the accessible route to entry, creating significant obstructions.</p>

Exhibit



Suggestions for ADA Compliance	Relocation may be the best option for this polling site, unless there is another entrance that better complies with ADA Standards, or the issues identified are addressed.
---------------------------------------	--

Church of the Nazarene

Issue(s)	The parking facility and access route are unstable (302.1, 502.4). The landing at the bottom of the ramp is sloped and damaged (405.4, 405.7). The ramp is unstable; The slope and cross slope of the ramp exceeds ADA Standards, and the boards create large openings in the accessible route (405.2, 405.4). There is a 2-inch lipped edge at the start of the ramp (303.4).
-----------------	--

Exhibit	 <p data-bbox="1031 1213 1409 1318">Unstable parking facility and access route.</p>
----------------	--



Suggestions for ADA Compliance	Relocation may be the best option for this polling site, unless there is another entrance that better complies with ADA Standards, or the issues identified are addressed.
---------------------------------------	--

Dallas Community Center	
Issue(s)	The parking facility is unstable and sloped (502.4). There is no accessible parking provided (502.2).

<p>Exhibit</p>	
<p>Suggestions for ADA Compliance</p>	<p>Install a paved area for an accessible parking facility or utilize temporary measures, ensuring it connects with the accessible route.</p> <p>Note: The ramp alongside the left of the building is not constructed correctly, in accordance with ADA Standards. Therefore, the front entrance should be used for election day.</p>

<p>Hilltop Elementary School</p>	
<p>Issue(s)</p>	<p>There is a 1-inch lipped edge on the sidewalk and no curb ramp is provided (303.4). The accessible route has sudden changes in slope and an unstable surface due to the brick area on the sidewalk (302.1).</p>

<p>Exhibit</p>	
<p>Suggestions for ADA Compliance</p>	<p>Install a curb ramp or bevel the lipped edge to ensure there is an accessible route from the accessible parking facility. Repair the brick area to ensure a stable, firm, and non-slip surface.</p>

<p>John Marshall High School</p>	
<p>Issue(s)</p>	<p>The accessible parking signage is faded and not visible (502.6).</p>

<p>Exhibit</p>	
<p>Suggestions for ADA Compliance</p>	<p>Replace the existing signage.</p>

<p>McNinch Elementary School</p>	
<p>Issue(s)</p>	<p>There is no accessible parking signage displayed (502.6).</p>
<p>Exhibit</p>	

Suggestions for ADA Compliance	Install van accessible parking signage to the minimum required height.
---------------------------------------	--

Moundsville Middle School

Issue(s)	There is no accessible parking signage displayed (502.6). The parking facility is sloped (502.4). The slope of the curb ramp exceeds ADA Standards (405.4). There is a 1 ½-inch lipped edge on the curb ramp (303.4).
-----------------	---



Suggestions for ADA Compliance	Adjust the existing curb ramp to comply with ADA Standards. Relocate the accessible parking facility, ensuring it complies with ADA Standards. Alternatively, another entrance at this location that better complies with ADA Standards could be utilized for the purpose of election day.
---------------------------------------	--

Mt Hope Community Building

Issue(s)	The parking facility is unstable and sloped (502.4). The existing parking signage is not displayed at the proper height (502.6). The cross slope of the ramp exceeds ADA Standards (405.4). The bottom landing of the ramp is sloped (405.7). There is no interior handrail and there are no handrail extensions on the ramp (405.8). There is no edge protection provided on the ramp (405.9). The door hardware is inaccessible (309.4). There is a 1-inch lipped edge at the door (303.4).
-----------------	---

Exhibit



Parking facility is unstable and sloped.

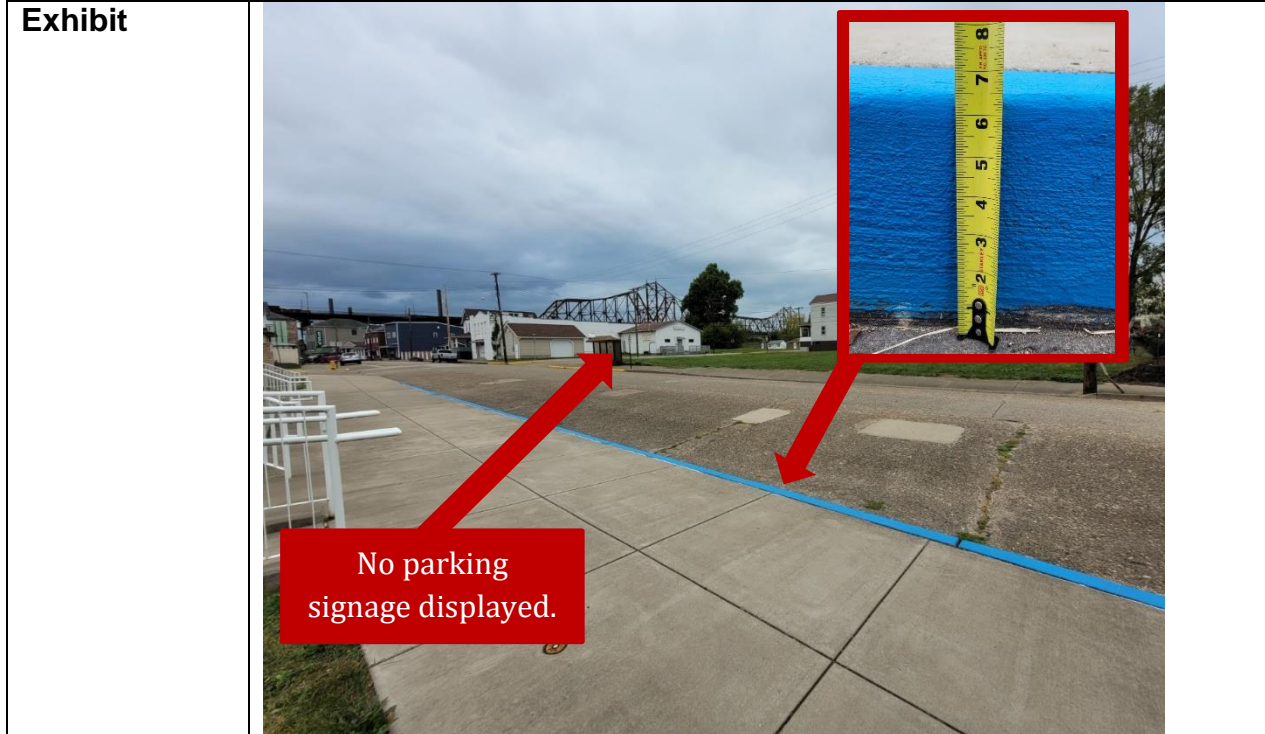


Missing handrails and edge protection.

Suggestions for ADA Compliance	Relocation may be the best option for this polling site, unless there is another entrance that better complies with ADA Standards, or the issues identified are addressed.
---------------------------------------	--

St John's Fellowship Hall

Issue(s)	There is no accessible parking signage displayed (502.6). There is no curb ramp provided (303.4).
-----------------	---



Suggestions for ADA Compliance	Install a curb ramp, ensuring it complies with ADA Standards. Install parking signage to the proper height.
---------------------------------------	---

Washington Lands Grade School

Issue(s)	There is no accessible parking signage displayed (502.6). There is not a parking space designated as van accessible (208.2.4, 502.2). The accessible parking spaces are not located on the closest route to the accessible entrance (206.2.1, 502.7). The slope of the curb ramp and flared edges exceeds ADA Standards (406.1, 406.3). There is a 1-inch lipped edge at the door (303.4). The pavement on the access route is cracked/damaged (302.1).
-----------------	---

Exhibit



Suggestions for ADA Compliance	Address the issues identified or utilize an alternative entrance during election day.
---------------------------------------	---

Disability Rights of WV strives to ensure all polling sites in West Virginia are accessible for voters with disabilities. If you have accessibility concerns about your polling site or would like your polling site to be evaluated for accessibility, please contact our office via email pava@drowv.org or by calling 304-346-0847.